

MODEL 4620 Accelerometer

Gas Damped, DC Response

High Sensitivity

Temperature Compensated

High Over Range Protection

MEMS Accelerometer

DESCRIPTION

The Model 4620 is a low frequency DC response accelerometer offering outstanding performance over a wide operating temperature range. The accelerometer is available in ranges from ± 2 to $\pm 250g$ and incorporates a 2nd generation MEMS sensing element with integral over-range stops. The output is signal conditioned to provide a low noise amplified signal.

The model 4620 incorporates a teflon insulated cable with a rugged strain relief designed for demanding applications.



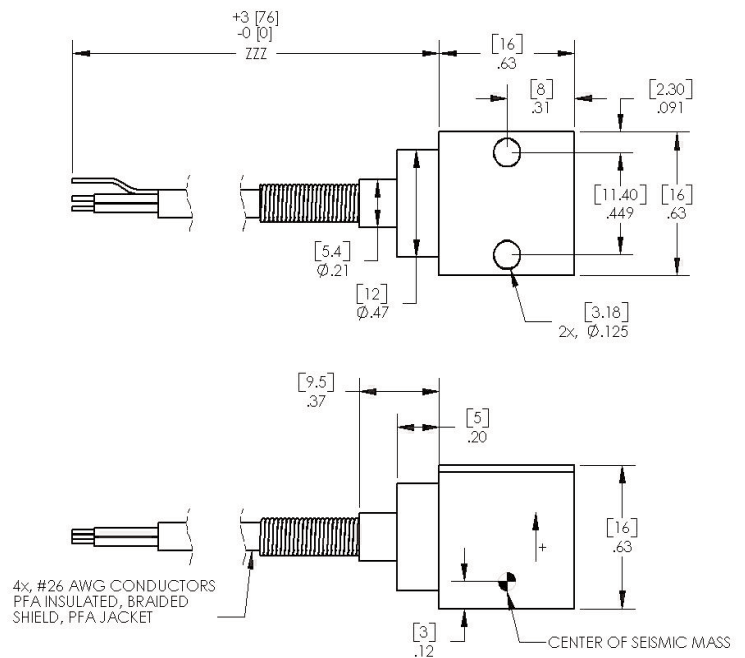
FEATURES

- ◆ $\pm 2g$ to $\pm 250g$ Dynamic Range
- ◆ Amplified Output
- ◆ Lower Power Consumption
- ◆ Gas Damping
- ◆ Integral Strain Relief
- ◆ DC, Low Frequency Response

APPLICATIONS

- ◆ Aerospace & Military Applications
- ◆ Structural Testing
- ◆ Test & Instrumentation
- ◆ Performance Testing
- ◆ Transportation

dimensions



Vibration Sensors Technical

Support:

Tel: 949-716-5377

Fax: 949-916-5677

measurement
SPECIALTIES

Model 4620 Accelerometer

performance specifications

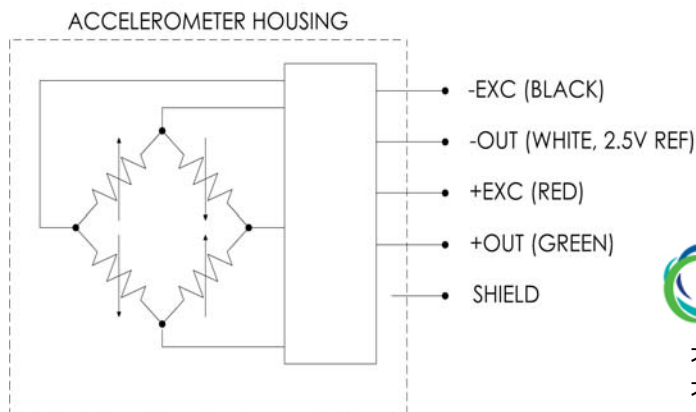
All values are typical at 25°C, 100Hz and 12Vdc excitation unless otherwise stated.

Measurement Specialties reserves the right to update and change these specifications without notice.

PARAMETERS

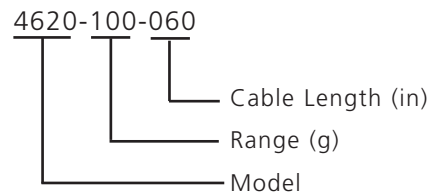
DYNAMIC						
Range	+/-2	+/-5	+/-10	+/-25	UNITS	NOTES
Sensitivity	1000	400	200	80	mV/g	Typical
Frequency Response	0-150	0-150	0-200	0-400	Hz	+/- 5%
ELECTRICAL						
Range	+/-50	+/-100	+/-250	UNITS		NOTES
Sensitivity	40	20	8	mV/g		Typical
Frequency Response	0-500	0-1000	0-1000	Hz		+/- 5%
Non-Linearity	+/-1			% FSO		Maximum
Transverse Sensitivity (Max)	+/-3			%		+/-1% Typical
Zero Acceleration Output	2.50+/-0.05			V		Maximum
Thermal Zero Shift (-40 to +100°C)	+/-0.02			% FSO/°C		Maximum
Thermal Sensitivity Shift (-40 to +100°C)	+/-0.02			% /°C		Maximum
Damping Ratio	0.70					Gas Damped
PHYSICAL						
Excitation Voltage	8 to 32			Vdc		
Excitation Current	5.0			mA		Typical
Reference Voltage	2.5			Vdc		
Output Impedance	100			Ohms		Maximum
Insulation Resistance (@ 50Vdc)	100			MΩ		Minimum
Ground Isolation	Isolated					
ENVIRONMENTAL						
Shock Limit	5,000			g's		
Operating Temperature	-54 to +121			°C		
Humidity	Epoxy Sealed					

electrical schematic



Vibration Sensors Technical Support:
 Tel: 949-716-5377
 Fax: 949-916-5677

ordering information



北京赛斯维测控技术有限公司
 北京市朝阳区望京西路48号
 金隅国际C座1002
 电话: +86 010 8477 5646
 传真: +86 010 5894 9029
 邮箱: sales@sensorway.cn
<http://www.sensorway.cn>

